

## How to Document - How to Download and Install Firefox Web Browser

**PLEASE NOTE:** The following information contained within this document is for students' use on their own Personal Computers – *updates and maintenance of all campus PCs are provided by the SSCT technical support staff.*

1.) To download Mozilla Firefox, go to their website [www.mozilla.com](http://www.mozilla.com). On the home page click the green "Download Mozilla Firefox – Free" box. Your Operating System will be detected and the correct installation automatically selected for you (Reference Figure 1).

2.) When prompted select the "Save" option. Select a location to download the program on your computer. Make sure you remember where you save the installation. For easy access, it is recommended that you save the installation setup file/program to your Desktop. The setup file/program can be deleted after the installation has finished (Reference Figure 2).



Figure 1.

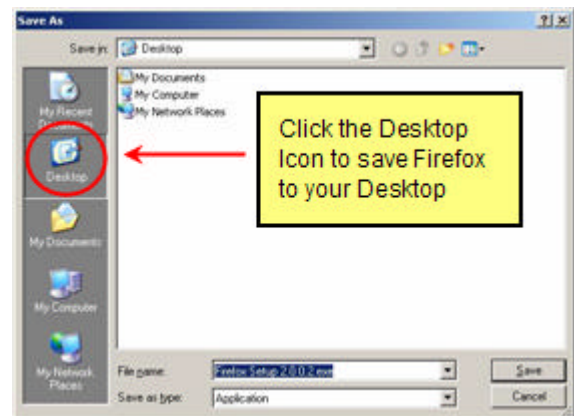


Figure 2.

3.) On your PC, navigate to the location where you saved the Firefox setup file/program. Double-click the setup program.

4.) Accept the license agreement and the default settings (Reference Figure 3).

5.) You are then prompted if you would like to set Firefox as your default browser, you have two options:  
A.) You can make Firefox your default browser and anytime you would like to open a browser window, you will need to select Firefox icon located on your Desktop. You will still be able to use Internet Explorer; however, you will have to manually open it.

B.) If you do not want to make Firefox your default browser, select Don't make Firefox my default browser. Choosing this option allows you to use both your current browser along with Firefox. Then you can decide on which one you prefer. If you prefer to use Firefox over your current browser, you can set your default browser to Firefox (as shown below).

6.) Continue clicking the Next button through the installation process, and select Finish. You have successfully installed the Firefox browser.

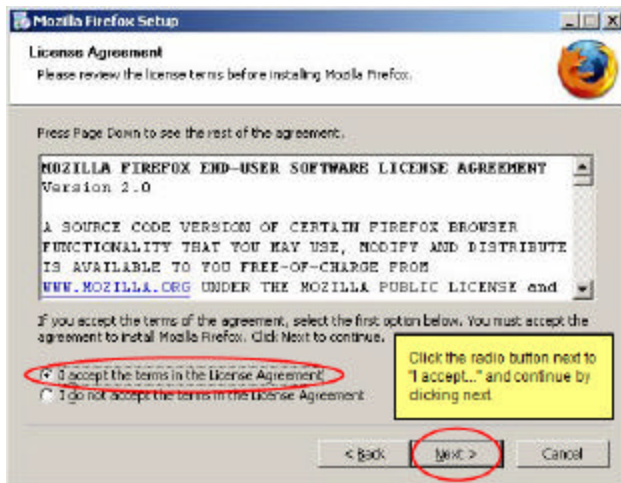


Figure 3.



Figure 4.

### To Set the Firefox Browser to be used as the default browser (optional):

- 1.) Double click the Firefox icon located on your desktop to open up a browser window. On the menu bar, select the "Tools" menu, and select the "Options" button.
- 2.) Under the "System Defaults" section, click the "Check Now" button (Reference Figure 5).
- 3.) When prompted click "Yes" to set Firefox as the default browser (Reference Figure 6).

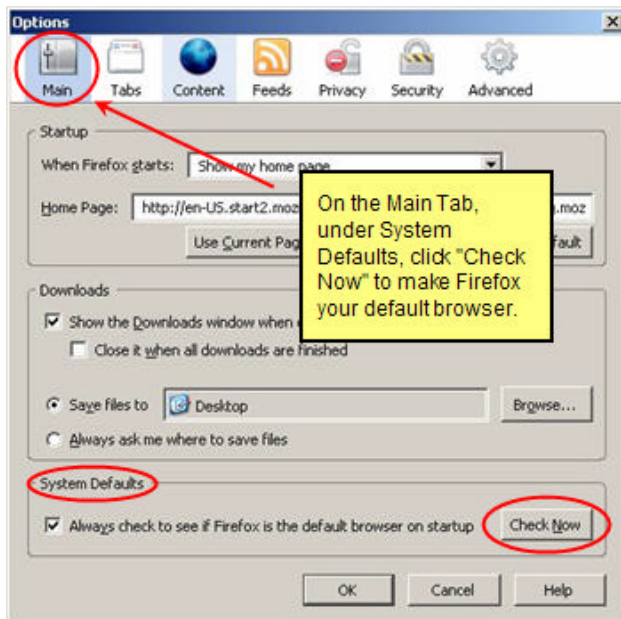


Figure 5.

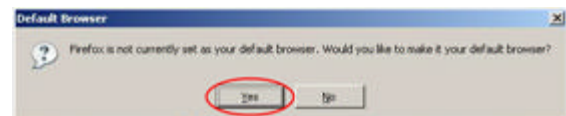


Figure 6.