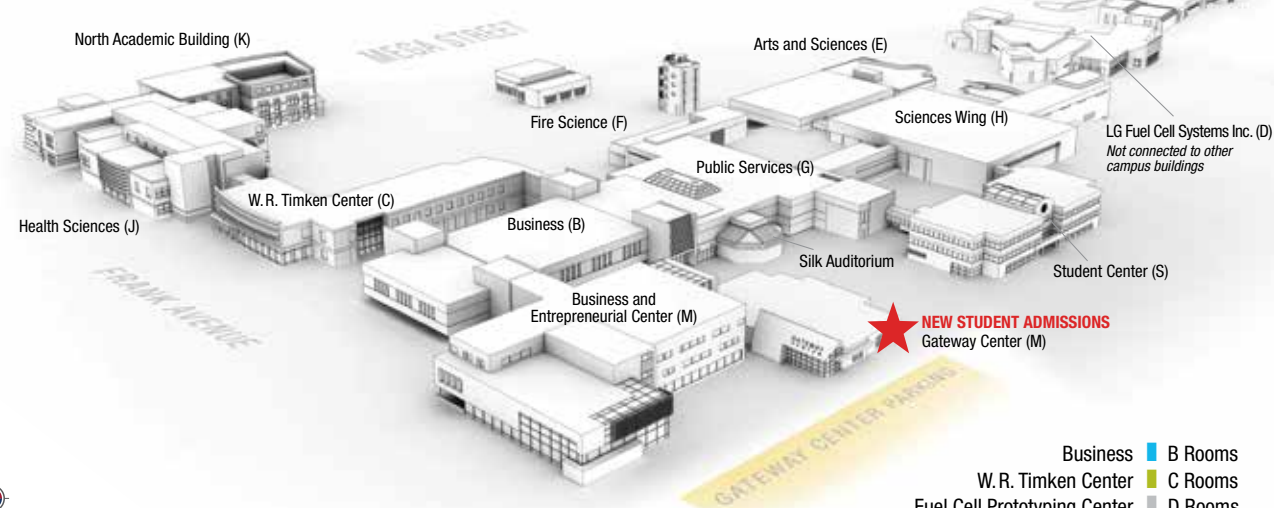
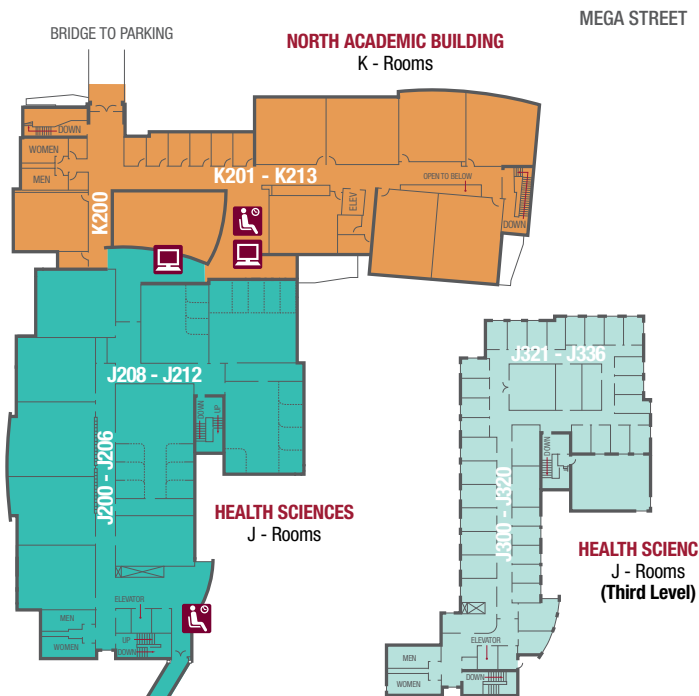
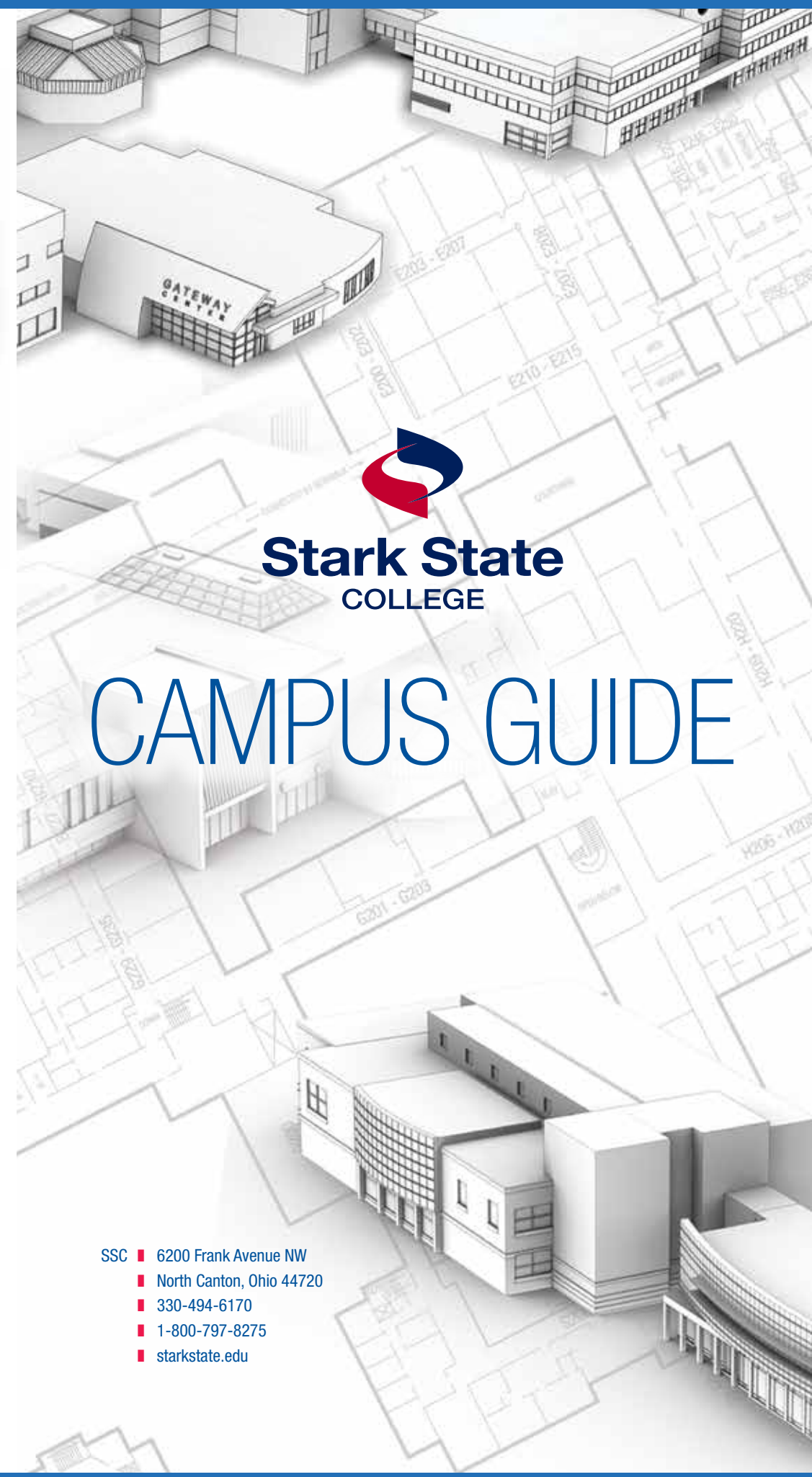
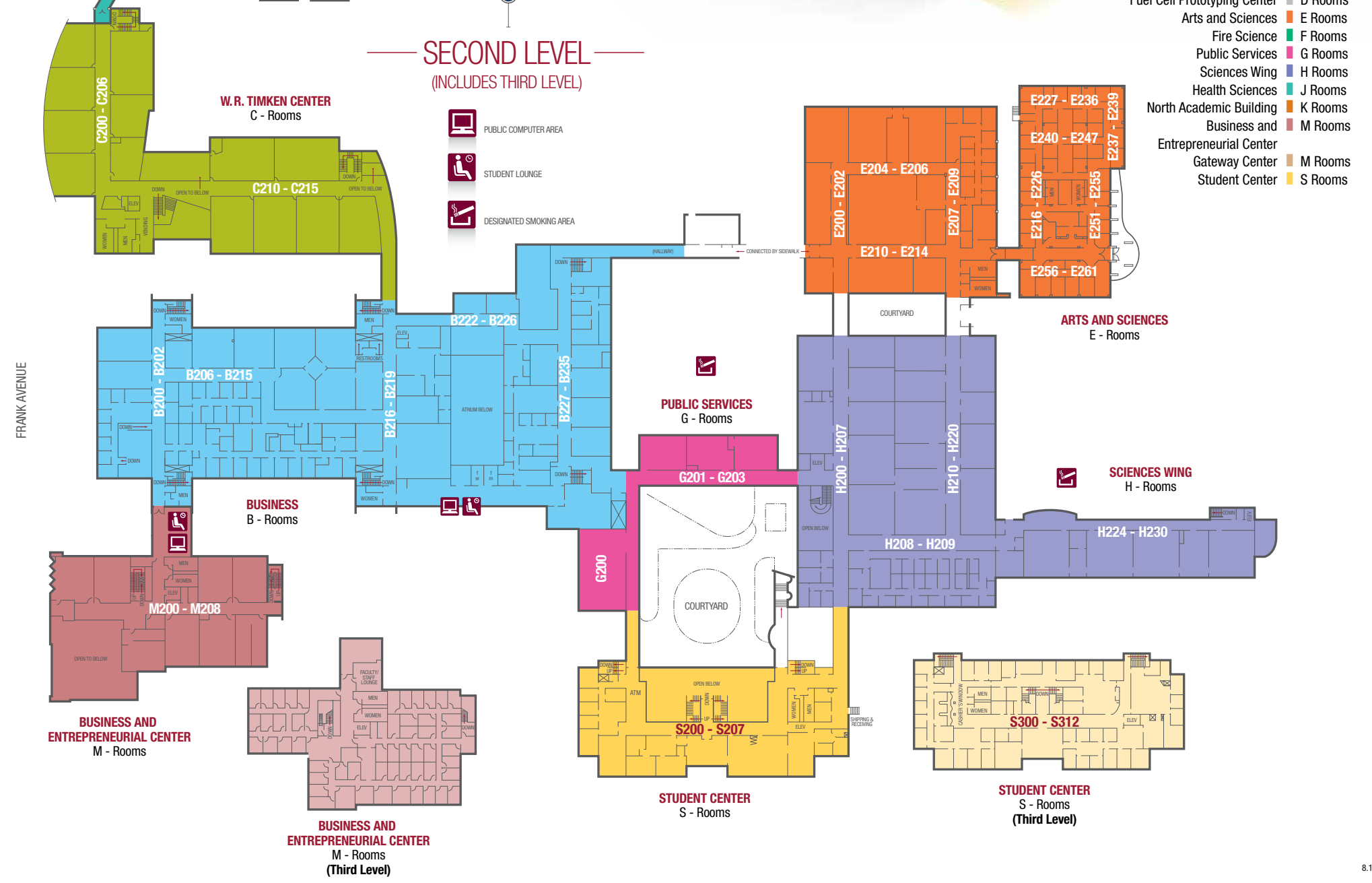


CAMPUS GUIDE



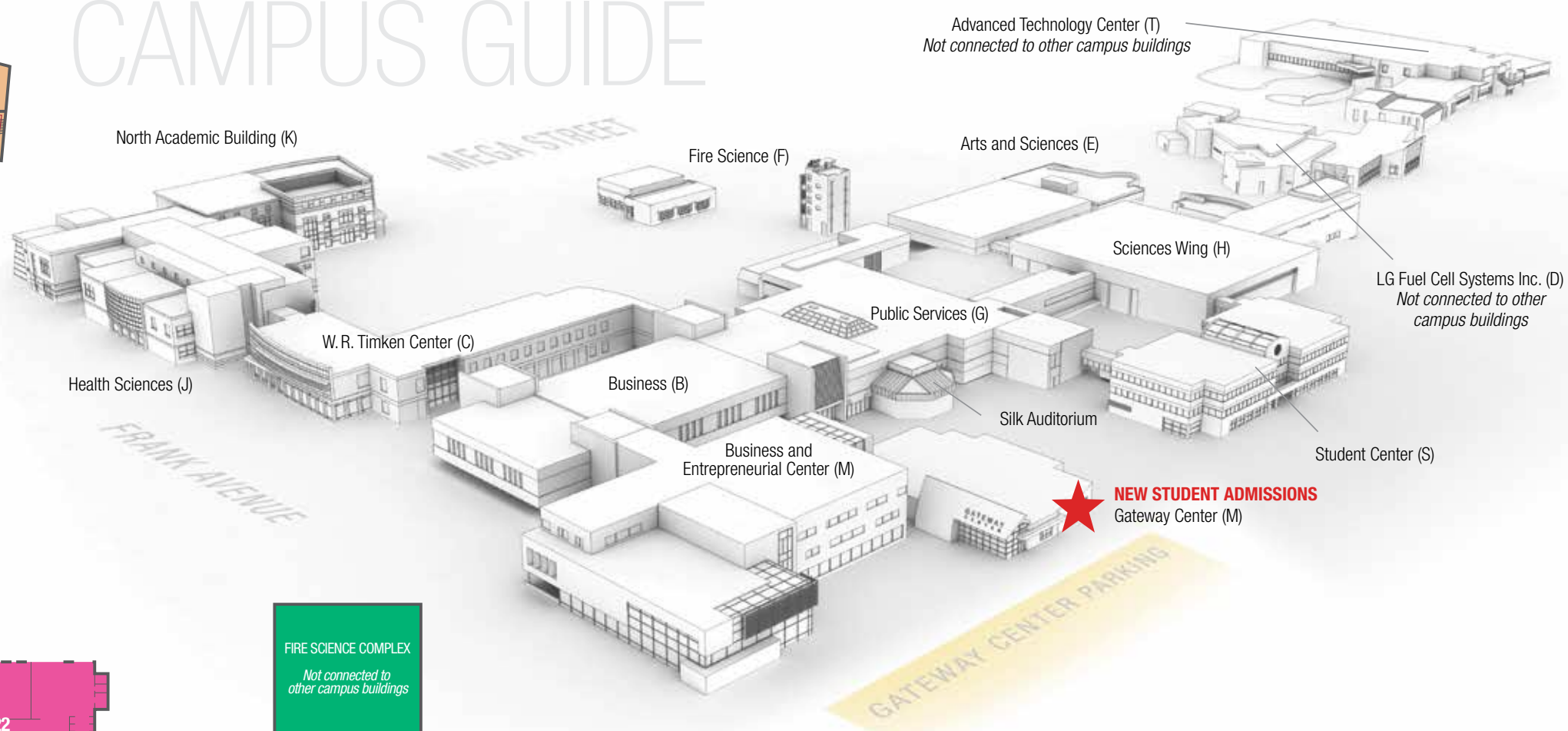
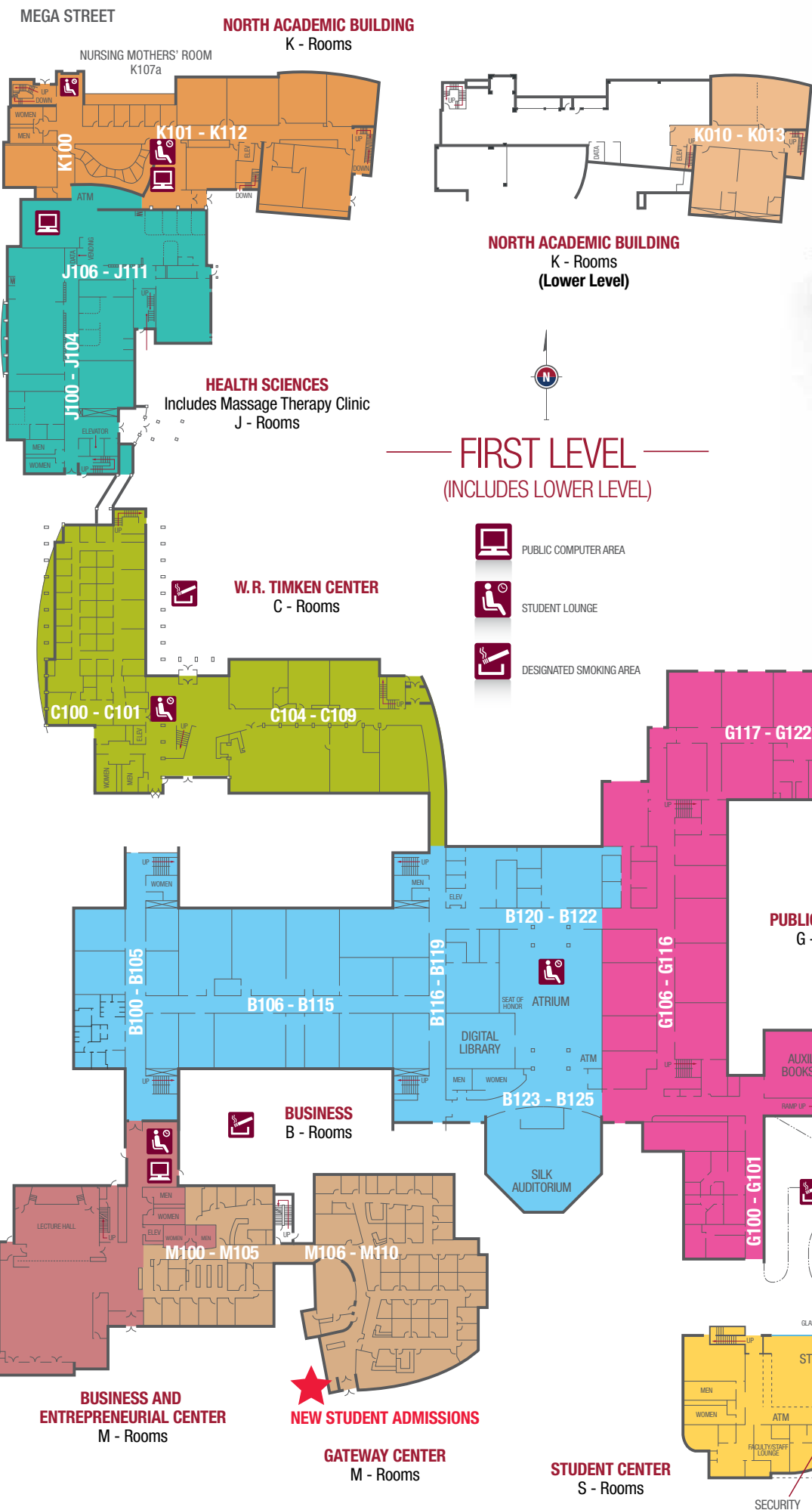
- Business B Rooms
- W.R. Timken Center C Rooms
- Fuel Cell Prototyping Center D Rooms
- Arts and Sciences E Rooms
- Fire Science F Rooms
- Public Services G Rooms
- Sciences Wing H Rooms
- Health Sciences J Rooms
- North Academic Building K Rooms
- Business and Entrepreneurial Center M Rooms
- Gateway Center M Rooms
- Student Center S Rooms



CAMPUS GUIDE

- SSC ■ 6200 Frank Avenue NW
- North Canton, Ohio 44720
- 330-494-6170
- 1-800-797-8275
- starkstate.edu

CAMPUS GUIDE



Use this map and campus signs to find classrooms and offices

- > Large black and white overhead signs direct you to specific buildings and groups of rooms.
- > All room numbers begin with a letter prefix followed by a three-digit number. Example: H101
- > The first digit in the room number indicates the floor on which the room is located. Example: H101 is on the first floor of the Sciences Wing; H201 is on the second floor of the Sciences Wing.

Most frequented locations on campus

Building	Office
Gateway Center	Academic Records/Registrar (M102)
Gateway Center	Admissions (M110)
Gateway Student Services (use Business and Entrepreneurial Center entrance)	Career Development (M104)
Gateway Student Services	College Credit Plus (M110)
Gateway Student Services	ACCUPLACER Testing (M110)
Gateway Student Services	Financial Aid/Registration (M102)
Gateway Student Services	Veterans Benefits Office (M102)
Business	Digital Library (Atrium near Silk Auditorium)
Business	Disability Support Services (B104)
Business	Help Desk (B219)
Business	Interfaith Campus Ministry (B230)
Business	Military Services (B104)
Business	Silk Auditorium (B125)
Student Center	Business Office (S301)
Student Center	Cashier (S300)
Student Center	College Store (S105)
Student Center	Security (Student Center main entrance)
Student Center	Student Recreation and Game Room (S200)
Sciences Wing	Science Learning Center (H200)
Sciences Wing	Stark County Dental Society (H206)
Arts and Sciences	Math Lab (E207, E205, E213)
Public Services	Writing Center (G200)
W.R. Timken Center	Learning Center (C105)